



**REGIONAL SPECIALISED METEOROLOGICAL CENTRE-TROPICAL CYCLONES, NEW DELHI
TROPICAL CYCLONE ADVISORY**

DEMS-RSMC SPECIAL TROPICAL CYCLONES NEW DELHI DATED 13.06.2023

FROM: RSMC –TROPICAL CYCLONES, NEW DELHI

**TO: STORM WARNING CENTRE, NAYPYI TAW (MYANMAR)
STORM WARNING CENTRE, BANGKOK (THAILAND)
STORM WARNING CENTRE, COLOMBO (SRILANKA)
STORM WARNING CENTRE, DHAKA (BANGLADESH)
STORM WARNING CENTRE, KARACHI (PAKISTAN)
METEOROLOGICAL OFFICE, MALE (MALDIVES)
OMAN METEOROLOGICAL DEPARTMENT, MUSCAT (THROUGH RTH JEDDAH)
YEMEN METEOROLOGICAL SERVICES, REPUBLIC OF YEMEN (THROUGH RTH JEDDAH)
NATIONAL CENTRE FOR METEOROLOGY, UAE (THROUGH RTH JEDDAH)
PRESIDENCY OF METEOROLOGY AND ENVIRONMENT, SAUDI ARABIA (THROUGH RTH JEDDAH)
IRAN METEOROLOGICAL ORGANISATION, (THROUGH RTH JEDDAH)
QATAR METEOROLOGICAL DEPARTMENT (THROUGH RTH JEDDAH)**

TROPICAL CYCLONE ADVISORY NO. 54 FOR NORTH INDIAN OCEAN (THE BAY OF BENGAL AND ARABIAN SEA) VALID FOR NEXT 120 HOURS ISSUED AT 0600 UTC OF 13.06.2023 BASED ON 0300 UTC OF 13.06.2023

SUB: VERY SEVERE CYCLONIC STORM “BIPARJOY” (PRONOUNCED AS “BIPORJOY”) OVER NORTHEAST AND ADJOINING EASTCENTRAL ARABIAN SEA (CYCLONE WARNING FOR SAURASHTRA & KUTCH COASTS (ORANGE MESSAGE))

THE VERY SEVERE CYCLONIC STORM “BIPARJOY” (PRONOUNCED AS “BIPORJOY”) OVER NORTHEAST AND ADJOINING EASTCENTRAL ARABIAN SEA MOVED NEARLY NORTH-NORTHWESTWARDS WITH A SPEED OF 12 KMPH DURING PAST 6-HOURS AND LAY CENTERED AT 0300 UTC OF TODAY, THE 13TH JUNE, 2023 OVER THE SAME REGION NEAR LATITUDE 20.9°N AND LONGITUDE 66.9°E, ABOUT 280 KM SOUTHWEST OF DEVBHUMI DWARKA (42731), 300 KM WEST-SOUTHWEST OF PORBANDAR (42830), 310 KM SOUTHWEST OF JAKHAU PORT, 330 KM SOUTHWEST OF NALIYA (42631) AND 450 KM SOUTH OF KARACHI (PAKISTAN, 41780).

IT IS VERY LIKELY TO MOVE NEARLY NORTHWARDS TILL 13TH MIDNIGHT, THEN MOVE NORTH-NORTHEASTWARDS AND CROSS SAURASHTRA & KUTCH AND ADJOINING PAKISTAN COASTS BETWEEN MANDVI (42929) AND KARACHI (41780) NEAR JAKHAU PORT (GUJARAT) AROUND 1200 UTC OF 15TH JUNE AS A VERY SEVERE CYCLONIC STORM WITH MAXIMUM SUSTAINED WIND SPEED OF 125-135 KMPH GUSTING TO 150 KMPH.

FORECAST TRACK AND INTENSITY ARE GIVEN BELOW:

DATE/TIME (UTC)	POSITION (LAT. °N/ LONG. °E)	MAXIMUM SUSTAINED SURFACE WIND SPEED (KMPH)	CATEGORY OF CYCLONIC DISTURBANCE
13.06.23/0300	20.9/66.9	150-160 Gusting To 180	Very Severe Cyclonic Storm
13.06.23/0600	21.1/66.8	145-155 Gusting To 170	Very Severe Cyclonic Storm
13.06.23/1200	21.4/66.8	140-150 Gusting To 165	Very Severe Cyclonic Storm
13.06.23/1800	21.7/67.0	135-145 Gusting To 160	Very Severe Cyclonic Storm
14.06.23/0000	22.1/67.3	135-145 Gusting To 160	Very Severe Cyclonic Storm
14.06.23/1200	22.5/67.6	130-140 Gusting To 155	Very Severe Cyclonic Storm
15.06.23/0000	22.9/67.9	125-135 Gusting To 150	Very Severe Cyclonic Storm

Cloud distribution: (a) Isolated: <25%, Scattered:25-50%, Broken: 51-75%, Solid:>75%, Convection Intensity: (a) Weak: Cloud Top Temperature (CTT) >-25°C, (b) Moderate: CTT: - 25°C to -40°C, (c) Intense: CTT: - 41°C to -70°C and (d) Very Intense: : Less than -70°C
PROBABILITY OF CYCLOGENESIS (FORMATION OF DEPRESSION):NIL: 0%, LOW: 1-33%, , MODERATE: 34-66% AND HIGH: 67-100%
This is a guidance Bulletin for WMO/ESCAP Panel Member countries. Visit respective National websites for Country specific Bulletins

15.06.23/1200	23.4/68.4	125-135 Gusting To 150	Very Severe Cyclonic Storm
16.06.23/0000	23.9/69.0	80-90 Gusting To 100	Cyclonic Storm
16.06.23/1200	24.4/70.0	50-60 Gusting To 70	Deep Depression

AS PER INSAT 3D IMAGERY INTENSITY OF THE SYSTEM IS T4.5. CLOUDS ARE ORGANISED IN CENTRAL DENSE OVERCAST PATTERN. MAJOR PART OF CONVECTION LIES TO THE WEST AND SOUTHWEST OF SYSTEM CENTRE. ASSOCIATED BROKEN LOW AND MEDIUM CLOUDS WITH EMBEDDED INTENSE TO VERY INTENSE CONVECTION LAY OVER CENTRAL ARABIAN SEA BETWEEN LATITUDE 17.5°N & 24.0°N AND LONGITUDE 62.0°E & 70.0°E. MINIMUM CLOUD TOP TEMPERATURE IS MINUS 93°C. CLOUDS ARE ORIENTED IN SOUTH-SOUTHWEST TO NORTH-NORTHEAST. IN ASSOCIATION WITH THE OUTER BAND, CONVECTIVE CLOUDS ARE COVERING COASTAL DISTRICTS OF SAURASHTRA AND KUTCH, EXTENDING FROM DEVBHUMI DWARKA DISTRICT TO KUTCH DISTRICT. THURDERSQUALL OCCURRED OVER THE ABOVE REGION DURING PAST 24 HOURS. HEAVY TO VERY HEAVY RAINFALL (7-20 CM) AT A FEW PLACES WITH ISOLATED EXTREMELY HEAVY FALL (≥ 20 CM) OCCURRED OVER THIS COASTAL REGION DURING PAST 24 HOURS ENDING AT 0300 UTC OF TODAY.

ASSOCIATED MAXIMUM SUSTAINED WIND SPEED IS 85 KNOTS GUSTING TO 95 KNOTS. THE ESTIMATED CENTRAL PRESSURE IS 970 HPA. THE PRESSURE HAS FALLEN ALONG SAURASHTRA AND KUTCH COASTS BY ABOUT 2-3 HPA DURING PAST 24 HOURS, ENDING AT 0300 UTC OF TODAY. SEA CONDITION IS LIKELY TO BE PHENOMENAL OVER NORTHEAST AND ADJOINING EASTCENTRAL ARABIAN SEA.

REMARKS:

SEA SURFACE TEMPERATURE IS AROUND 29-30°C OVER EASTCENTRAL AND ADJOINING NORTHEAST ARABIAN SEA AND IS HIGHER 30-31°C OVER NORTHEAST ARABIAN SEA AND ALONG & OFF SAURASHTRA COAST. THE LOW LEVEL VORTICITY IS AROUND $250 \times 10^{-6} \text{S}^{-1}$ TO THE SOUTH-SOUTHWEST OF THE SYSTEM CENTRE AND IS NORTHEAST ORIENTED. LOW LEVEL CONVERGENCE IS ABOUT $30 \times 10^{-5} \text{S}^{-1}$ TO THE SOUTHWEST OF THE SYSTEM CENTRE AND UPPER LEVEL DIVERGENCE IS ABOUT $10 \times 10^{-5} \text{S}^{-1}$ TO THE NORTHEAST OF SYSTEM CENTRE AND ANOTHER ZONE TO THE SOUTHWEST OF SYSTEM CENTRE. WIND SHEAR IS HIGH (20-25 KNOTS) OVER SYSTEM AREA AND IS DECREASING TO 05-15 KNOTS ALONG THE FORECAST TRACK. CURRENTLY, THE SYSTEM IS TRACKING NORTH-NORTHWESTWARD ALONG THE WESTERN PERIPHERY OF A SUB-TROPICAL RIDGE LOCATED ALONG 21.5 DEG N IN ASSOCIATION WITH AN ANTICYCLONIC CIRCULATION LOCATED OVER CENTRAL INDIA, AND IS BEING STEERED BY ITS MIDDLE AND UPPER LEVELS SOUTH SOUTHEASTERLY WINDS. AS, THE CYCLONE WILL CROSS THE RIDGE LOCATION, IT WILL EXHIBIT NORTH-NORTHEASTWARDS MOVEMENT. AS THE SYSTEM WILL APPROACH COAST, IT IS LIKELY TO EXPERIENCE LOWER OCEAN THERMAL ENERGY (40-50 KJ/CM²) AND DECREASE IN MIDDLE LEVEL HUMIDITY DUE TO DRY COLD AIR INTRUSION.

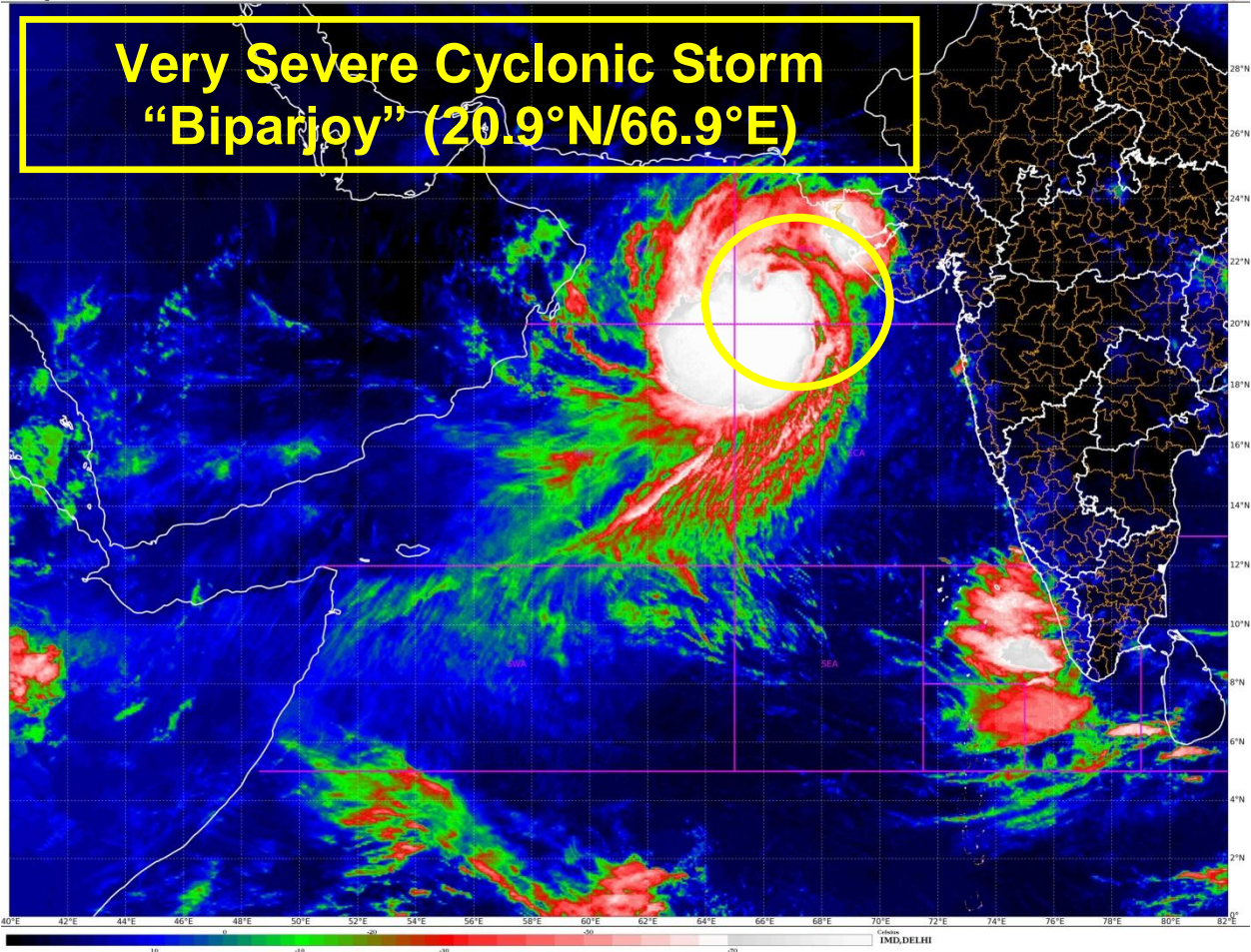
LATEST GUIDANCE FROM VARIOUS MODELS (NCUM-G, NCUM-R, ECMWF, IMD HWRF, VARIOUS IMD MME SYSTEMS) IS CONVERGING AND ALL OF THESE ARE INDICATING INTIAL NORTH-NORTHWESTWARDS MOVEMENT FOLLOWED BY GRADUAL NORTH-NORTHEASTWARDS MOVEMENT TOWARDS SAURASHTRA & KUTCH AND ADJOINING PAKISTAN COASTS. ONLY IMD GFS AND NCEP GFS ARE INDICATING CROSSING OVER ADJOINING PAKISTAN COAST. THE LANDFALL TIME IS VARYING BETWEEN 1200 UTC TO 1800 UTC OF 15TH JUNE AND LANDFALL POINT IS VARYING BETWEEN LONGITUDE 67.5E AND 68.5E EXCEPT (IMD GFS, NCEP GFS).

CONSIDERING ALL THE ABOVE, TC BIPARJOY IS VERY LIKELY TO MOVE NEARLY NORTHWARDS TILL 13TH MIDNIGHT, THEN MOVE NORTH-NORTHEASTWARDS AND CROSS SAURASHTRA & KUTCH AND ADJOINING PAKISTAN COASTS BETWEEN MANDVI (42929) AND KARACHI (41780) NEAR JAKHAU PORT (GUJARAT) AROUND 1200 UTC OF 15TH JUNE AS A VERY SEVERE CYCLONIC STORM WITH MAXIMUM SUSTAINED WIND SPEED OF 125-135 KMPH GUSTING TO 150 KMPH.

**M SHARMA
SCIENTIST D
RSMC NEW DELHI**



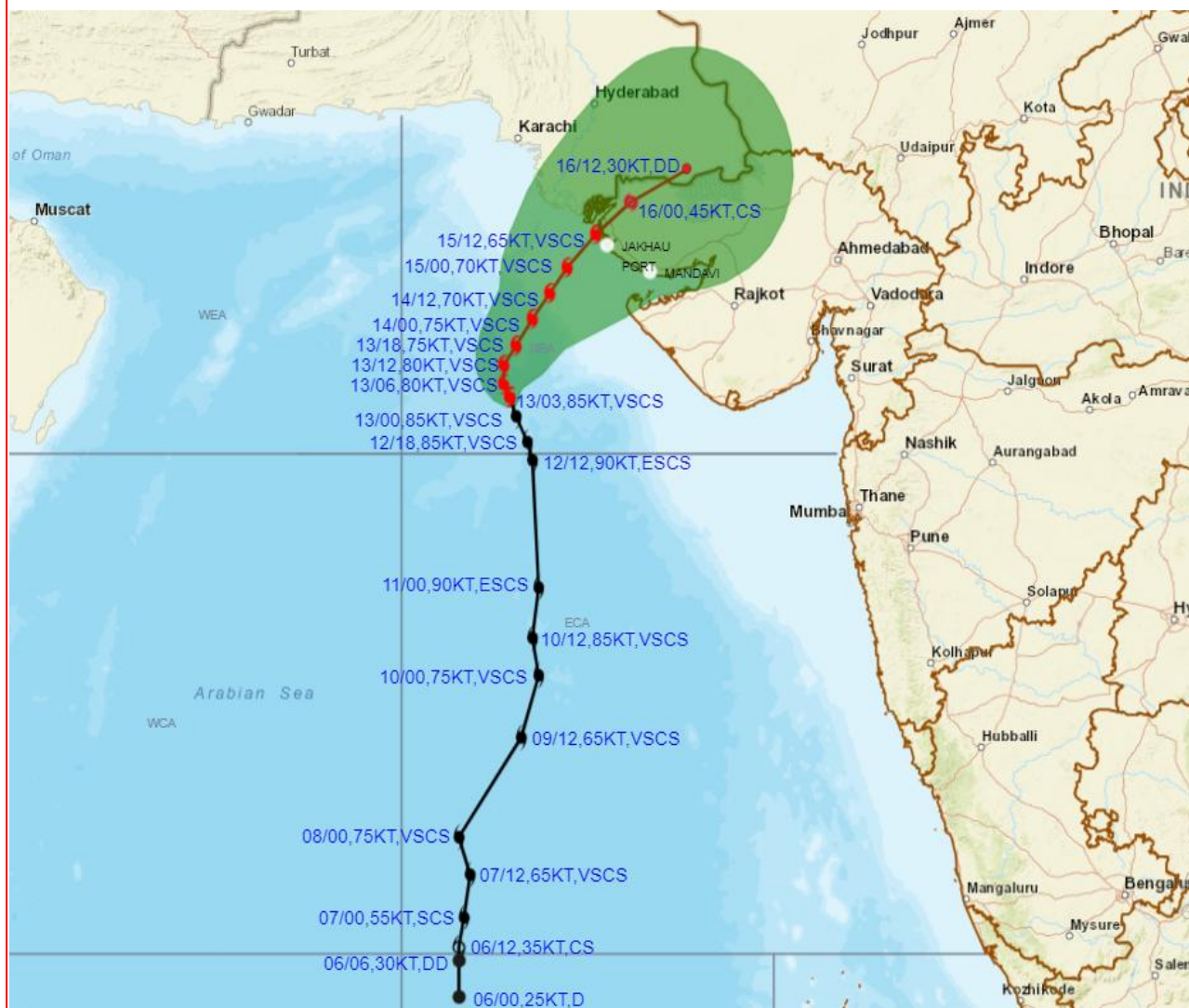
Very Severe Cyclonic Storm "Biparjoy" (20.9°N/66.9°E)



Cloud distribution: (a) Isolated: <25%, Scattered:25-50%, Broken: 51-75%, Solid:>75%, Convection Intensity: (a) Weak: Cloud Top Temperature (CTT) >-25°C, (b) Moderate: CTT: - 25°C to -40°C, (c) Intense: CTT: - 41°C to -70°C and (d) Very Intense: : Less than -70°C
PROBABILITY OF CYCLOGENESIS (FORMATION OF DEPRESSION):NIL: 0%, LOW: 1-33%, , MODERATE: 34-66% AND HIGH: 67-100%
This is a guidance Bulletin for WMO/ESCAP Panel Member countries. Visit respective National websites for Country specific Bulletins



OBSERVED AND FORECAST TRACK ALONGWITH CONE OF UNCERTAINTY OF VERY SEVERE CYCLONIC STORM "BIPARJOY" OVER NORTHEAST AND ADJOINING EASTCENTRAL ARABIAN SEA BASED ON 0300 UTC (0830 IST) OF 13TH JUNE 2023.



DATE/TIME IN UTC
IST=UTC + 0530

L: LOW PRESSURE AREA
WML: WELL MARKED LOW PRESSURE AREA
D: DEPRESSION (17-27 KT)
DD: DEEP DEPRESSION (28-33 KT)
CS: CYCLONIC STORM (34-47 KT)
SCS: SEVERE CYCLONIC STORM (48-63KT)
VSCS: VERY SEVERE CYCLONIC STORM (64-89 KT)
ESCS: EXTREMELY SEVERE CYCLONIC STORM (90-119 KT)
SuCS: SUPER CYCLONIC STORM (≥ 120 KT)

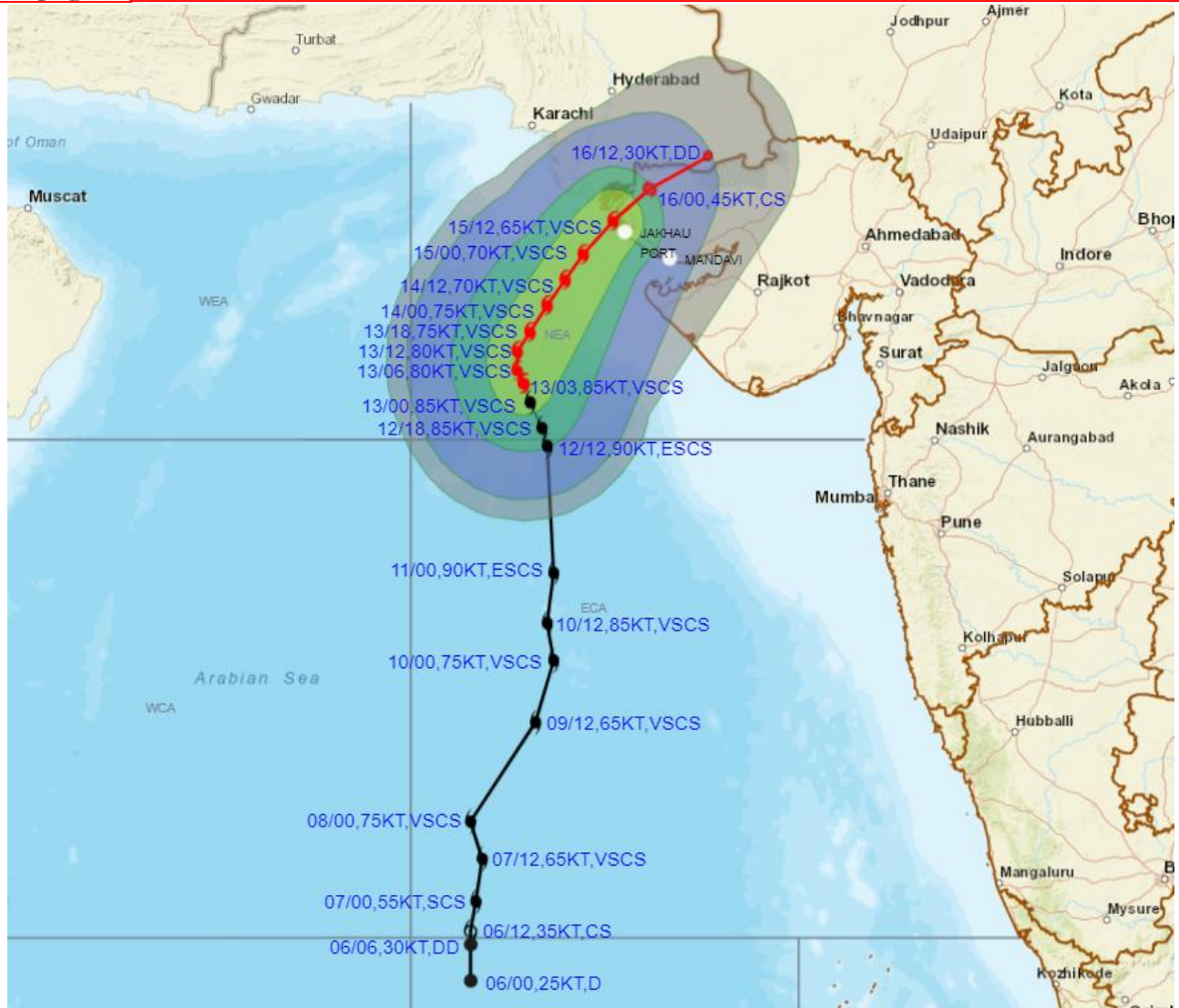
- LESS THAN 34 KT
- 34-47 KT
- ≥ 48 KT
- █ OBSERVED TRACK
- █ FORECAST TRACK
- ▲ CONE OF UNCERTAINTY

Forecast	DISTANCE(KM) AND DIRECTION FROM STATIONS				
	PORBANDAR	DWARKA	JAKHAU PORT	NALIYA	KARACHI AIRPORT
14.06.23/0000	240, WNW	180, W	180, SW	200, SW	320, S
15.06.23/0000	150, N	110, NE	130, ESE	110, ESE	350, SE
16.06.23/0000	260, NNW	170, N	80, NNE	70, NNE	220, ESE

Cloud distribution: (a) Isolated: <25%, Scattered:25-50%, Broken: 51-75%, Solid:>75%, Convection Intensity: (a) Weak: Cloud Top Temperature (CTT) >-25°C, (b) Moderate: CTT: - 25°C to -40°C, (c) Intense: CTT: - 41°C to -70°C and (d) Very Intense: : Less than -70°C
PROBABILITY OF CYCLOGENESIS (FORMATION OF DEPRESSION):NIL: 0%, LOW: 1-33%, , MODERATE: 34-66% AND HIGH: 67-100%
This is a guidance Bulletin for WMO/ESCAP Panel Member countries. Visit respective National websites for Country specific Bulletins



OBSERVED AND FORECAST TRACK ALONGWITH QUADRANT WIND DISTRIBUTION OF VERY SEVERE CYCLONIC STORM "BIPARJOY" OVER NORTHEAST AND ADJOINING EASTCENTRAL ARABIAN SEA BASED ON 0300 UTC (0830 IST) OF 13TH JUNE 2023.



DATE/TIME IN UTC

IST=UTC + 0530

L: LOW PRESSURE AREA

WML: WELL MARKED LOW PRESSURE AREA

D: DEPRESSION (17-27 KT)

DD: DEEP DEPRESSION (28-33 KT)

CS: CYCLONIC STORM (34-47 KT)

SCS: SEVERE CYCLONIC STORM (48-63KT)

VSCS: VERY SEVERE CYCLONIC STORM (64-89 KT)

ESCS: EXTREMELY SEVERE CYCLONIC STORM (90-119 KT)

SuCS: SUPER CYCLONIC STORM (≥ 120 KT)

● LESS THAN 34 KT

○ 34-47 KT

● ≥ 48 KT

— OBSERVED TRACK

— FORECAST TRACK

● CONE OF UNCERTAINTY

AREA OF MAXIMUM SUSTAINED WIND SPEED:

■ 28-33 KT (52-61 KMPH)

■ 34-49 KT (62-91 KMPH)

■ 50-63 KT (92-117 KMPH)

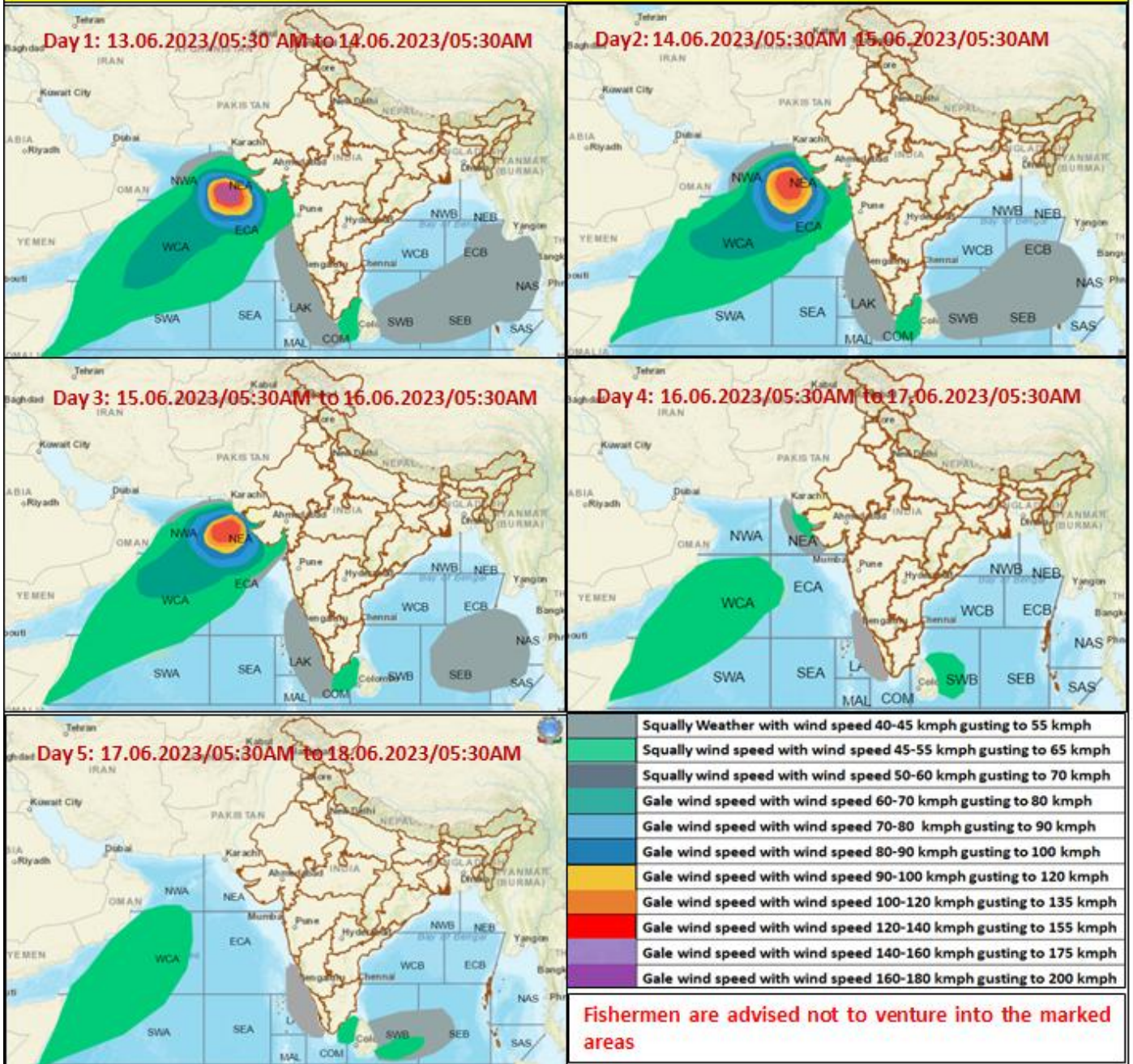
■ ≥ 64 KT (≥118 KMPH)

IMPACT OVER THE SEA

MSW (knot/kmph)	Impact	Action
28-33 (52-61)	Very rough seas	Total suspension of fishing operations
34-49 (62-91)	High to very high seas	Total suspension of fishing operations
50-63 (92-117)	Very high seas	Total suspension of fishing operations
≥ 64 (≥118)	Phenomenal	Total suspension of fishing operations

Cloud distribution: (a) Isolated: <25%, Scattered:25-50%, Broken: 51-75%, Solid:>75%, Convection Intensity: (a) Weak: Cloud Top Temperature (CTT) >-25°C, (b) Moderate: CTT: - 25°C to -40°C, (c) Intense: CTT: - 41°C to -70°C and (d) Very Intense: : Less than -70°C
PROBABILITY OF CYCLOGENESIS (FORMATION OF DEPRESSION):NIL: 0%, LOW: 1-33%, , MODERATE: 34-66% AND HIGH: 67-100%
 This is a guidance Bulletin for WMO/ESCAP Panel Member countries. Visit respective National websites for Country specific Bulletins

Fishermen warning graphics



Cloud distribution: (a) Isolated: <25%, Scattered:25-50%, Broken: 51-75%, Solid:>75%, Convection Intensity: (a) Weak: Cloud Top Temperature (CTT) >-25°C, (b) Moderate: CTT: - 25°C to -40°C, (c) Intense: CTT: - 41°C to -70°C and (d) Very Intense: : Less than -70°C
PROBABILITY OF CYCLOGENESIS (FORMATION OF DEPRESSION): NIL: 0%, LOW: 1-33%, , MODERATE: 34-66% AND HIGH: 67-100%
 This is a guidance Bulletin for WMO/ESCAP Panel Member countries. Visit respective National websites for Country specific Bulletins